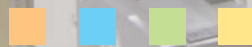


TKM United States, Inc.

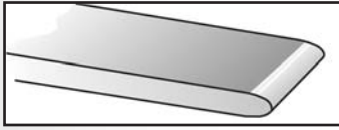


Doctor Blades for Flexo Printing

TKM GROUP · THE KNIFE MANUFACTURERS



FlexoTip / OptiPrint Doctor Blades



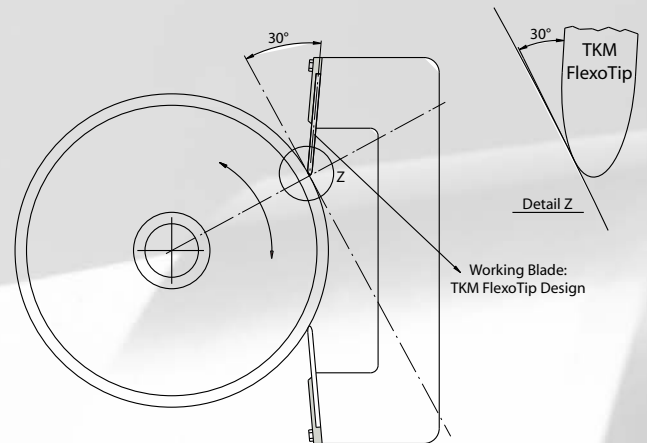
- Designed specifically for Flexo Printing chambered doctor blade systems.
- Double 30° contact zone provides “goof proof” installation - Doctor Blade can't be installed up side down.
- ESP Edge Treatment provides a perfectly smooth, burr free contact zone.

Reduce Score Lines

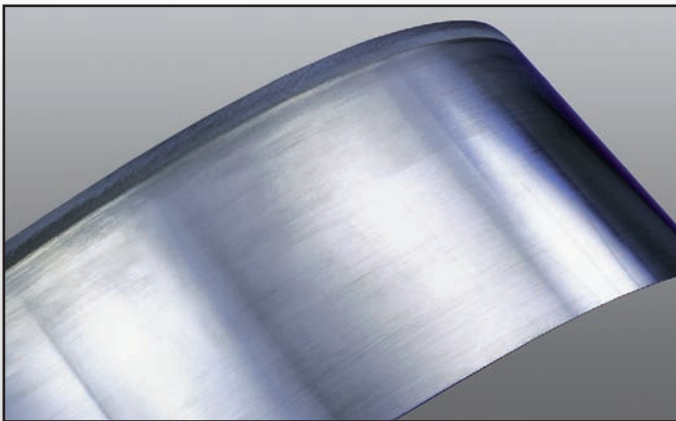
Our ESP FlexoTip edge treatment, combined with exacting metallurgical standards provides a long lasting doctor blade without producing large burrs or chip-outs. Small pieces or slivers of steel are one of the primary causes of score lines. Our FlexoTip blade when used with filters and magnets reduce the extremely high cost of score lines.

Reduce Back Doctoring

Recent technological advancements have transformed Flexo Printing. Higher run speeds are one of these advancements but unfortunately these higher speeds often lead to Back Doctoring. Back Doctoring increases costs and can affect print quality. Our ESP Treatment has anti-adhesive properties that allow ink in unused cells to return to the chamber. Leading OEMs recommend the FlexoTip Blade.



TKM DuroBlade® High-Performance Doctor Blades



BENEFITS:

- Longer Life
- Increased blade chamber seal life
- Better sealing
- No run-in time - less waste
- Consistent printing quality
- Improved wiping of the cylinder
- Reduced scoring lines
- Increasing in-press uptime

The tip wears slowly and evenly, resulting in fewer blade changes, hence less press downtime, and maintains consistent print quality.

Although the blade tip ceramic material has a different, softer composition than the ceramic coating of the anilox cylinder, the two are perfectly compatible.

As the blade tip is protected, there is no risk of metallic slivers or shavings off the blade mixing with the ink and causing lines.

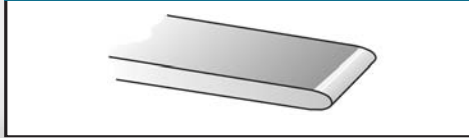
SPECIFICATIONS

The DuroBlade Flexo series is available in TKM's standard ceramic tip material, and in both standard steel and stainless.

AVAILABLE TIP STYLES

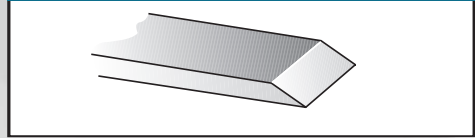


FlexoTip



Designed for use with enclosed Doctor Blade chamber systems. Advantages include increased lifetime, reduction in score lines and reduced back doctoring for Flexographic printing applications.

Single Bevel



Small tip provides immediate clean wipe. Best used with single blade systems.

Stable ESP Tip



Our Stable ESP blade has a long bevel giving the working edge extra strength and rigidity. This design is best suited for small tip sizes and long runs.

Preground ESP Tip



Tip thickness is held within 5 microns (0.005mm) ensuring a consistent contact zone with no variation in tonal values.

AVAILABLE MATERIALS

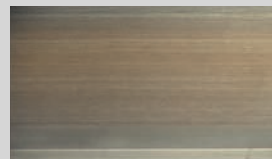


DuroBlade



TKM's ceramic-tipped flexo blade is a steel blade with an enhanced working edge. It requires no run-in time and provides constant quality throughout its lifetime.

PowerPrint Special Alloy Steel



Material provides more wear resistance, toughness and smooth doctoring. The best alternative when coated blades or standard materials will not produce acceptable results. If you are looking for a very high quality wipe with superior lifetime, try PowerPrint!

MeyerPrint Carbon Steel



This material has proven to be very reliable doctor blade steel meeting our standards. Material purity is optimized and has high chrome content compared to other blades on the market.

OptiPrint Premium Carbon Steel



Also optimized in purity. Additionally has five times higher chromium content than MeyerPrint Carbon Steel. Advantages include a very clean, reliable wipe with longer lifetime.

NiroPrint Stainless Steel



Corrosion resistant material best suited for water based and aggressive inks or coatings.

PolyPrint Polyester



Material best suited as a containment blade in chamber systems or for doctoring in a Flexographic printing application. Available with either a square or a single bevel edge.

TKM United States, Inc.

*Your Comprehensive All-In-One Source For
Quality Printing Knives & Consumable Parts*



▪ Flexo Doctor Blades

- Toothed Cutoff Knives
- Toothed Crossperf Knives
- SurePerf Patented "Anti-Gusseting" Blade
- Cutting Rubbers
- Foam Cheekwoods
- Circular Slitter Knives
- Bottom Knives & Anvils
- Circular Perforating Knives
- Circular Scoring Knives
- Circular Knife Holders & Parts
- Moveable & Stationary Jaws
- Tucker & Chopper Blades
- Folding Pins
- Ink Wash-Up Blades
- Ink Fountain Blades
- Printing Sheeter Knives
- Jaw Pads
- Flock Tape
- Paper Guillotine Knives
- Paper Trimmer Knives
- Cutting Sticks
- FlexoTip Doctor Blades
- Gravure Doctor Blades
- Sheeter Knives

TKM United States, Inc.

Mailing Address:
PO Box 75015
Cincinnati, OH 45275 USA

Delivery Address:
1845 Airport Exchange Blvd. - Suite 150
Erlanger, KY 41018

Toll Free: (866) 856-8721
(866) TKM-USA1
Telephone: (859) 689-7094
Fax: (859) 689-7565
Internet: www.tkmus.com

TKM GROUP · THE KNIFE MANUFACTURERS



TKM United States, Inc., Erlanger, KY



Rolf Meyer GmbH / Bargteheide, Germany



IKS Klingelberg GmbH / Remscheid, Germany