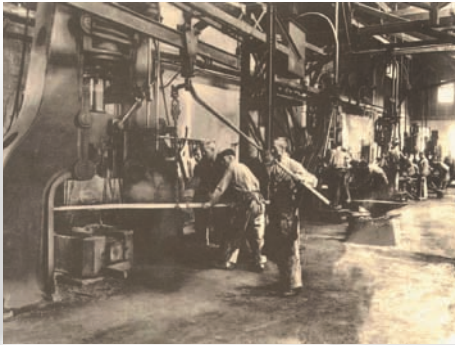


BLADES, KNIVES & ACCESSORIES FOR THE TISSUE INDUSTRY





ABOUT US

A long tradition signifies commitment. The history of our company can be traced back to 1814 with the manufacturing of machine knives beginning in 1908. IKS Klingenberg today is one of the oldest machine knife manufacturers in Germany. IKS Klingenberg has built a solid reputation worldwide for manufacturing only the highest quality knives.

Through close cooperation with converting OEM machine manufacturers and intensive partnerships with innovative customers, our dedication, consistency and competence forms the basis for continued development and the successful growth of IKS Klingenberg in the tissue industry.

QUALITY EXCEEDS CURRENT INDUSTRY STANDARDS

In today's tissue industry, converting facilities are under constant pressure to optimize their production, meet shorter delivery demands and reduce costs, all without compromising the quality of their finished products. Now more than ever, high speed machines need high performance cutting tools. As the premium manufacturer of such tools, IKS Klingenberg has specialized in this field by being able to work very closely with tissue manufacturers from all over the world.

to date on our latest product developments. We can optimize your converting department's cutting processes.

Based on specially designed state of the art production equipment and the best heat treatment and surface finishing in the industry, our log saw blades consistently have higher quality and longer life. Both help to improve your converting bottom line.

Our highly skilled Specialists can provide technical advice, and cost cutting solutions for your operation. Our Specialists can also provide training and seminars on site and keep you up

Our bottom line ~ We provide the reliability and quality that you need and demand in blades, knives, and accessories for the Tissue Industry.



IKS Klingenberg GmbH, Remscheid
Headquarters

PRODUCTS

Log Saw Blades

IKS Klingelberg is well known for its high quality log saw blades. We produce blade diameters up to 47 1/4" (1200 mm).

We produce blades for all existing log saw machines, e.g. PERINI, PCMC, Futura, Kawano Zoki, Bretting, MTC and more.

MATERIAL GRADES AVAILABLE ARE:

CHROMAVAN

Chrome-Vanadium alloyed Tool Steel
Economically priced log saw blade

CHROMALIT

High Carbon High Chrome (HCHC) Steel
Today's most produced and sold quality.

DURITAN

High Speed Steel (HSS)
Best performance for the latest generation of fast running log saw machines with 3 or 4 infeed lanes. The life time of DURITAN blades is higher than CHROMALIT.



Log saw blades



Blade at work



Log saw blades in wooden crate



Cutting edge protection with metal inlay for higher level safety

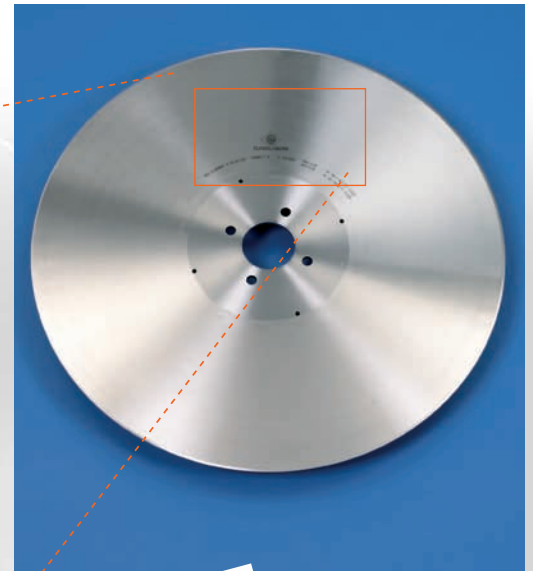
UNIQUE BLADE QUALITY CERTIFICATION

Automatic check and laser engraving of all relevant parameters (i.e. Runout TIR and Tension)

- 24" (609.6mm) diameter blades +/- 0.003" (0.075mm)
- 32" (812.8mm) diameter blades +/- 0.004" (0.10mm)
- 34.25" (870mm) diameter blades +/- 0.004" (0.10mm)
- 40" (1016mm) diameter blades +/- 0.005" (0.125mm)



Etching detail on each blade



Log saw blade



CBN GRINDING WHEELS

Always the right choice to complement our blades!

We offer grinding wheels for machines like PERINI, PCMC, Italconverting, Bretting, MTC, Kawano Zoki and others. Special grinding wheels have been designed in use with our high performance blades and lubrication system, which give you:

- Fewer sparks
- Superior blade edge
- Longer life time
- Less product contamination



CBN grinding wheel and dressing stick



CBN grinding wheels

PERFORATION AND ANVIL KNIVES

PERINI

All sizes, bond patterns and anvil knives are available in bimetal and carbon steel.

PCMC

All sizes and bond patterns are available in HSS and PM-Steel. The anvil knives are produced from solid tungsten carbide.

Perforation and anvil knives are also available for other machine types like Bretting and Kawano Zoki.



Perforation and anvil knives Perini



Perforation and anvil knives PCMC

LUBRICATION SYSTEM AND LUBRIKS-05

The lubrication system, with IKS Klingelberg's newly developed lubricant LUBRIKS-05 supports the idea of a perfect cut along with a faster cutting speed. The water based lubricant (95% water) is atomized onto the blade surface by high tech spray nozzles. The water evaporates, leaves a film on the blade which prevents glue build up and reduces friction between blade and product to a minimum.

The combination of our log saw blades, grinding wheels and lubrication system provides the highest level of efficiency for your log saw machine.



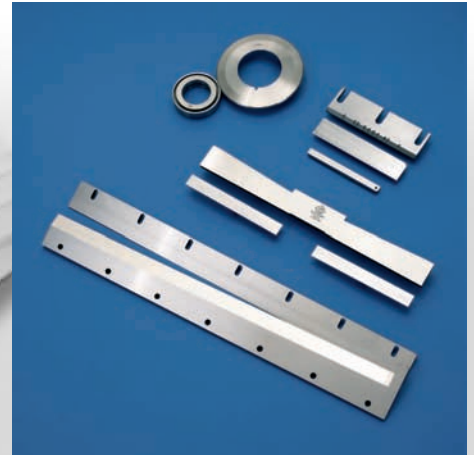
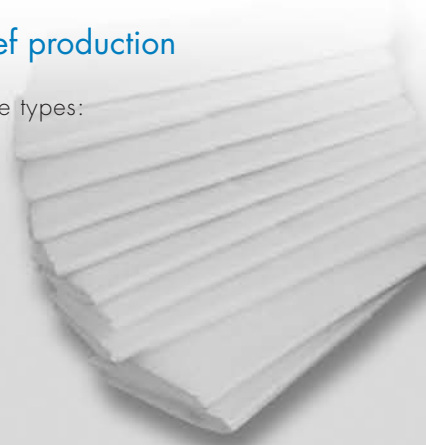
Lubrication System and Lubriks-05

SHEET PRODUCTS

1. Machine knives for handkerchief production

We produce knives for the following machine types:

- W+D
- Senning
and others



2. Machine knives and band knives for napkin production

We produce knives for the following machine types:

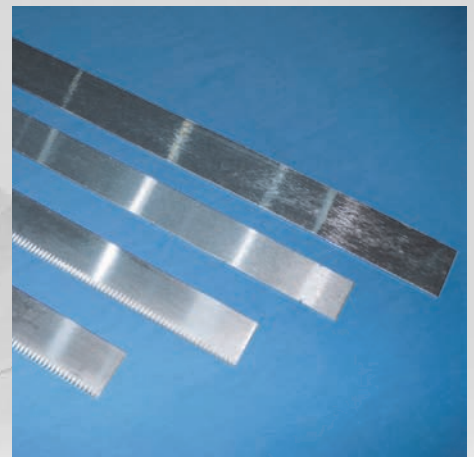
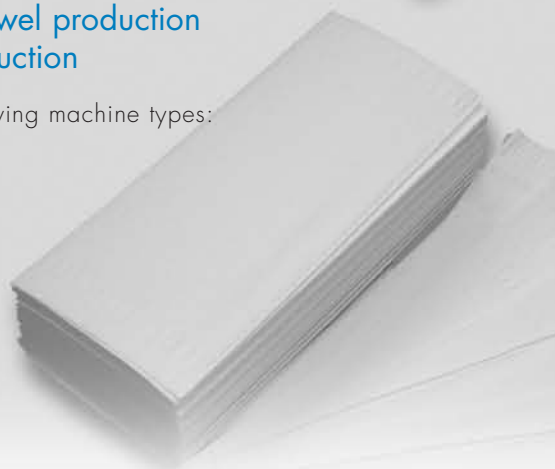
- W+D
- Senning
- Bretting
- Serv-o-tec
- Hobema
- Omet
and others



3. Machine knives for towel production and facial tissue production

We produce knives for the following machine types:

- Bretting
- Hobema
- Serv-o-tec
and others



MISCELLANEOUS

1. Packaging Knives

We produce knives for the following machine types:

- TMC
 - Casmatic/Wrapmatic
 - Amotek
 - Optima
 - Senning
 - Serv-o-tec
 - Cassoli
- and others



2. Stainless steel Doctor Blades for flexo printing and glue scraping

We produce knives for the following machine types:

- Perini
 - PCMC
 - Futura
- and others





TKM UNITED STATES, INC.
 Mailing Address:
 PO Box 75015
 Cincinnati, OH 45275 USA
 Delivery Address:
 1845 Airport Exchange Blvd. - Suite 150
 Erlanger, KY 41018
 T: (866) 856-8721
 T: (859) 689-7094
 F: (859) 689-7565
 E-mail: sales@tkmus.com
 www.tkmus.com



TKM United States, Inc., Erlanger, KY



IKS KLINGELBERG GMBH
 Headquarters & Sales
 In der Fleute 18
 D-42897 Remscheid
 Germany
 T: +49 (0) 2191-969-0
 F: +49 (0) 2191-969-111
 E-mail: info@interknife.com
 www.interknife.com



IKS Klingelberg GmbH, Remscheid



ROLF MEYER GMBH
 Sales & Production
 Heinrich-Hertz-Straße 17
 22941 Bargteheide
 Germany
 T: +49 (0) 4532 / 400-0
 F: +49 (0) 4532 / 400-200
 E-mail: info@rolfmeyer.de
 www.rolfmeyer.de



Rolf Meyer GmbH, Bargteheide

THE IKS KLINGELBERG GROUP

- KNIVES FOR THE **PAPER**-INDUSTRY
- KNIVES FOR THE **METAL**-INDUSTRY
- KNIVES FOR THE **WOOD**-INDUSTRY
- KNIVES FOR THE **PLASTIC, RUBBER & RECYCLING** INDUSTRY

TKM UNITED STATES, INC. · THE KNIFE MANUFACTURERS

